

Monolithic crystal filter

MQF10.7-1500/16



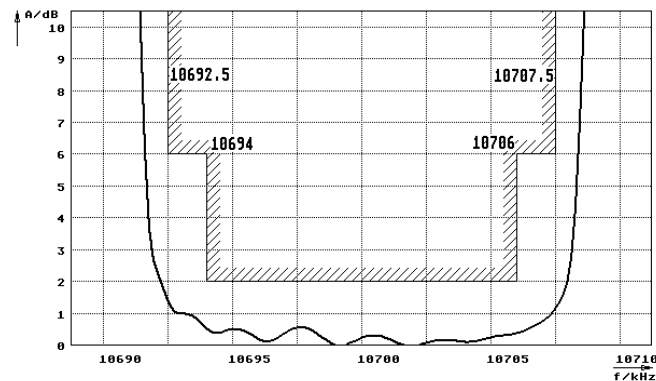
Application

- 10 pol filter
- i.f.- filter
- use in mobile and stationary transceivers

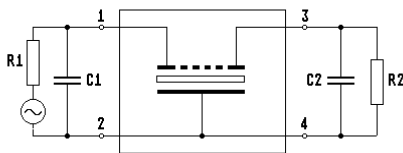
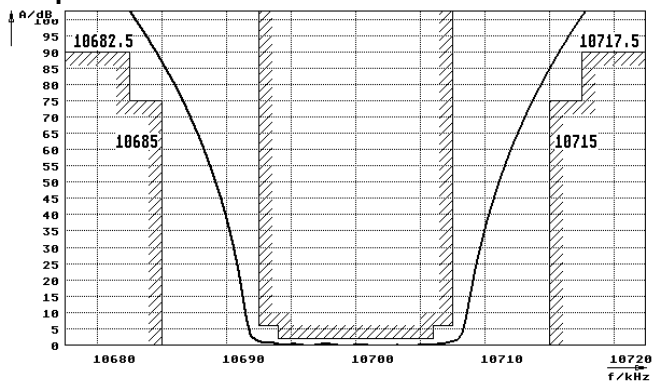
Limiting values		Unit	Value
Nominal frequency	f_0	MHz	10.7
Insertion loss		dB	< 4.0
Pass band at 6.0dB		kHz	$\pm > 7.5$
Ripple in pass band	$f_0 \pm 6 \text{ kHz}$	dB	< 2.0
Stop band attenuation	$f_0 \pm 15 \text{ kHz}$	dB	> 75
	$f_0 \pm 17.5 \text{ kHz}$	dB	> 90
Alternate attenuation	$f_0 \pm 17.5 \dots 300 \text{ kHz}$	dB	> 90
	Terminating impedance Z		
R1 C1		Ohm/pF	3000 1
R2 C2		Ohm/pF	3000 1
Operating temp. range		°C	-25... +70
Storage temp. range		°C	-55... +80
Environment conditions			according to CF001

Characteristics MQF10.7-1500/16

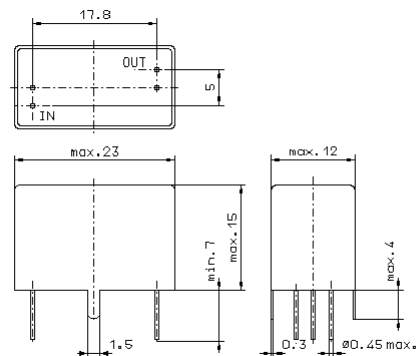
Pass band



Stop band



- Pin connections:
- 1 Input
 - 2 Ground-Input
 - 3 Output
 - 4 Ground-Output



GV6