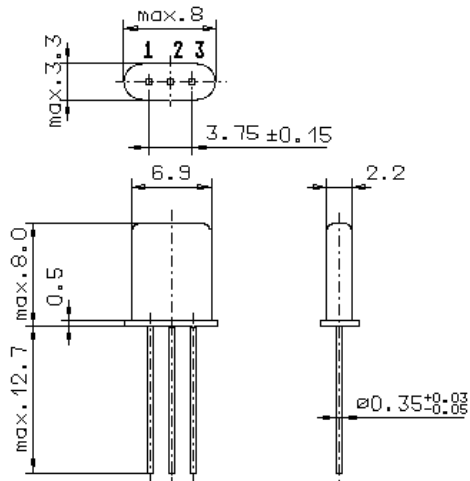


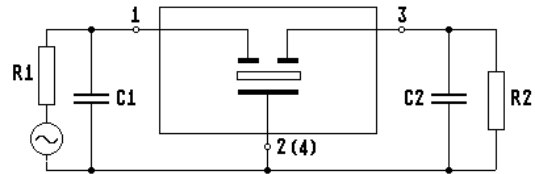
Specification for monolithic crystal filter: **MQF 20.525 - 4000 / 01**

1. General

1.1. Package:



GH9



- | | |
|-----------------------------------|--------------------|
| 1.2. Type name: | MQF 20.525-4000/01 |
| 1.3. Number of poles: | 2 |
| 1.4. Operating temperature range: | -40°C to +85°C |
| 1.5. Storage temperature range: | -55°C to +85°C |

2. Electric values

- | | |
|---|----------------------------------|
| 2.1. Nominal centre frequency fo: | 20.525 MHz |
| 2.2. Pass band | |
| 2.2.1. Bandwidth between 3 dB - frequencies: | > fo ± 20.0 kHz |
| 2.2.2. Ripple at fo ± 14.0 kHz: | < 1.0 dB (peak to peak) |
| 2.2.3. Insertion loss: | < 2.0 dB |
| (measured on smallest attenuation in pass band) | |
| 2.3. Stop band | |
| 2.3.1. fo ± 70 kHz | > 15 dB |
| 2.3.2. fo ± 150 kHz | > 30 dB |
| 2.3.3. Alternate attenuation | > 30 dB (except spurious) |
| 2.3.4. Spurious responses fo+150.....fo+800 kHz | > 15 dB |
| 2.4. Terminating impedance R//C (input and output): | 4800 Ω // - 0.6 pF |
| 2.5. Maximum input power level | +5/+15 (working / non-damaged) |

- | | |
|----------------------------|------------------------------------|
| 3. Marking: | VI date code
20.525-
4000/01 |
| 4. Environment conditions: | Corresponding to Vectron CF001 |

Edited by: _____ date: _____ name: _____