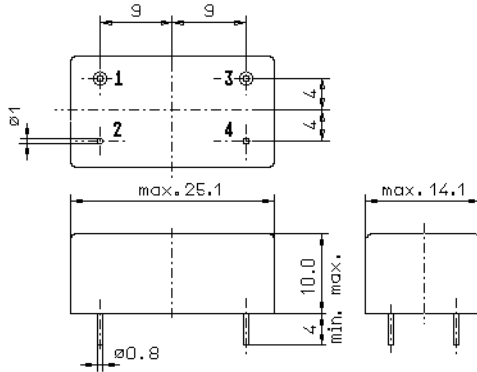


Specification for monolithic crystal filter:

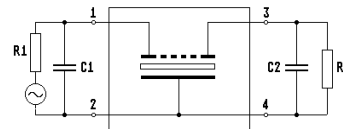
MQF 21.6285-5000/03

1. General

1.1. Case:



GM3



- 1.2. Type name: MQF 21.6285-5000/03
- 1.3. Number of poles: 6
- 1.4. Operating temperature range: -40°C to +85°C
- 1.5. Storage temperature range: -45°C to +85°C

2. Electric values

2.1. Nominal centre frequency f_0 : 21.6285 MHz

2.2. Pass band

- 2.2.1. Bandwidth between 6 dB - frequencies: $> f_0 \pm 25$ kHz
- 2.2.2. Ripple: < 2.0 dB at $f_0 \pm 20.0$ kHz
- 2.2.3. Insertion loss: < 3.0 dB
(measured on smallest attenuation in pass band)

2.3. Stop band

- 2.3.1. $f_0 \pm 70$ kHz > 60 dB
- 2.3.2. alternate attenuation > 60 dB (except spurious)

2.4. Terminating impedance R/C (input and output): $50 \Omega // 0$ pF

3. Marking on the case: manufacturer, date code
MQF 21.6285-5000/03

4. Environment conditions: Corresponding to Telefilter CF001

Edited by: _____ date: _____ name: _____