

Monolithic crystal filter

MQF21.4-1200/18



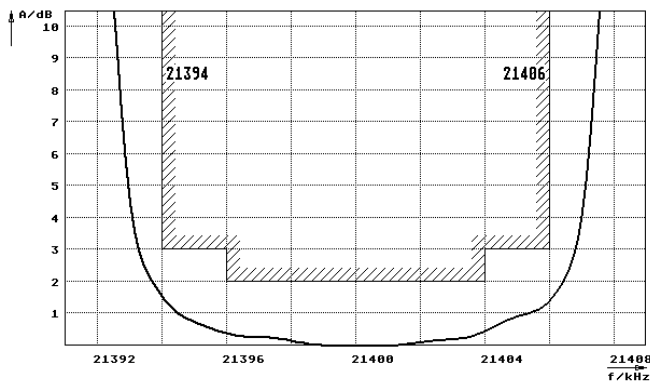
Application

- 8 pol filter
- i.f.- filter
- use in mobile and stationary transceivers

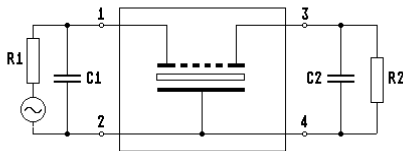
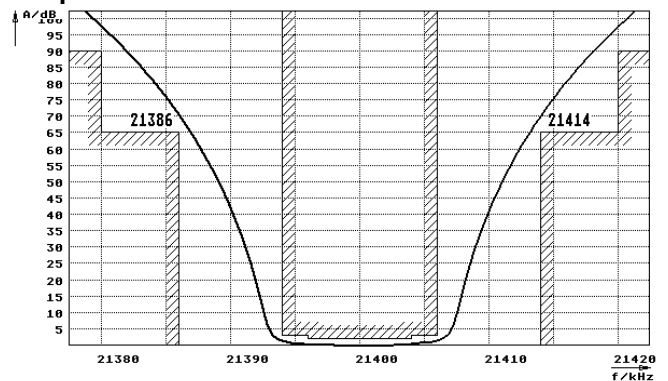
Limiting values		Unit	Value
Center frequency	f_0	MHz	21.4
Insertion loss		dB	≤ 3.0
Pass band at 3.0 dB		kHz	± 6.00
Ripple in pass band	$f_0 \pm 4.00$ kHz	dB	≤ 2.0
Stop band attenuation	$f_0 \pm 14$ kHz	dB	≥ 65
	$f_0 \pm 20$ kHz	dB	> 90
Spurious responses	$f_0 \pm 20...500$ kHz	dB	> 65
Terminating impedance Z			
R1 C1		Ohm/pF	1200 2.5
R2 C2		Ohm/pF	1200 2.5
Operating temp. range		$^{\circ}\text{C}$	-20... +70

Characteristics MQF21.4-1200/18

Pass band



Stop band



- Pin connections:
- 1 Input
 - 2 Ground-Input
 - 3 Output
 - 4 Ground-Output

