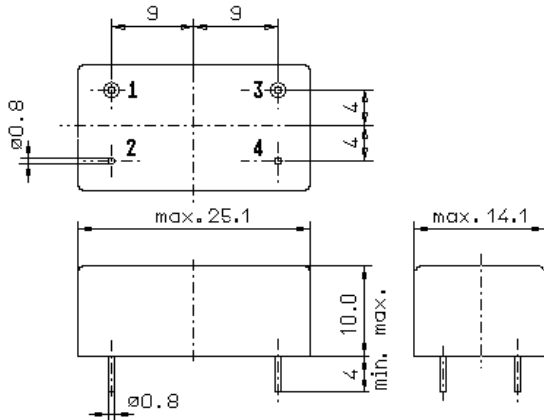


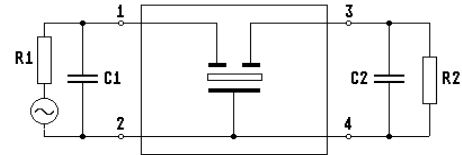
Specification for monolithic crystal filter: **MQF 44.85 - 1300/06**

**1. General**

1.1. Package:



GM3



- 1.2. Type name: MQF 44.85-1300/06
- 1.3. Number of poles: 4
- 1.4. Operating temperature range: -20°C to +70°C
- 1.5. Storage temperature range: -35°C to +80°C

**2. Electric values**

- 2.1. Nominal centre frequency fo: 44.85 MHz
- 2.2. **Pass band**
  - 2.2.1. Bandwidth between 3 dB - frequencies:  $\geq f_0 \pm 6.5$  kHz
  - 2.2.2. Ripple:  $\leq 1.0$  dB at  $f_0 \pm 4.5$  kHz
  - 2.2.3. Group delay distortion:  $\leq 40$   $\mu$ s at  $f_0 \pm 5.5$  kHz
  - 2.2.4. Insertion loss:  $\leq 5.0$  dB  
( measured on smallest attenuation in pass band )
- 2.3. **Stop band**
  - 2.3.1.  $f_0 \pm 17$  kHz  $\geq 25$  dB
  - 2.3.2.  $f_0 \pm 40$  kHz  $\geq 60$  dB
  - 2.3.3.  $f_0 \pm 50$  kHz  $\geq 70$  dB
  - 2.3.4.  $f_0 \pm ( 100 \pm 5 )$  kHz  $\geq 70$  dB
  - 2.3.5.  $f_0 - ( 900 \pm 5 )$  kHz  $\geq 80$  dB
  - 2.3.6.  $f_0 + ( 900 \pm 5 )$  kHz  $\geq 90$  dB ( except spurious )
- 2.4. Terminating impedance R/C ( input and output ): 50  $\Omega$  // 0 pF
- 2.5. Intermodulation
  - 2.5.1. Outband - intermodulation frequencies :  $f_0 \pm 50$  kHz /  $f_0 \pm 100$  kHz
  - input power level: -10 dBm
  - IM:  $\geq 90$  dB
- 3. Marking on the package: Manufacturer, date code  
MQF 44.85-1300/06
- 4. Environment conditions: Corresponding to Telefilter CF001

Edited by: \_\_\_\_\_ date: \_\_\_\_\_ name: \_\_\_\_\_