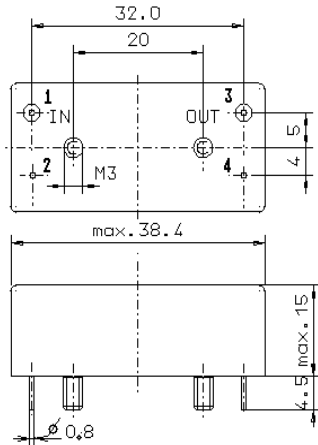


Specification for crystal filter:

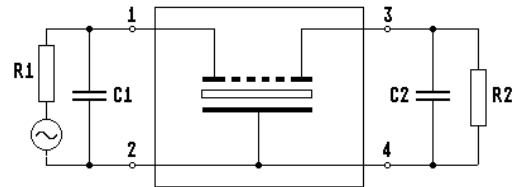
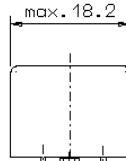
QF 45.0-6000/02

1. General

1.1. Case:



GM17.4



- | | |
|-----------------------------------|-----------------|
| 1.2. Type name: | QF 45.0-6000/02 |
| 1.3. Number of poles: | 4 |
| 1.4. Operating temperature range: | -20°C to +70°C |
| 1.5. Storage temperature range: | -35°C to +85°C |

2. Electric values

- | | |
|---|-----------------------------------|
| 2.1. Nominal centre frequency fo: | 45.0 MHz |
| 2.2. Pass band | |
| 2.2.1. Bandwidth between 3 dB - frequencies: | $\geq f_0 \pm 30$ kHz |
| 2.2.2. Ripple: | ≤ 1.0 dB at $f_0 \pm 22$ kHz |
| 2.2.3. Insertion loss:
(measured on smallest attenuation in pass band) | ≤ 4.0 dB |
| 2.3. Stop band | |
| 2.3.1. $f_0 \pm 100$ kHz | ≥ 30 dB |
| 2.3.2. alternate attenuation | ≥ 50 dB (except spurious) |
| 2.4. Terminating impedance (input and output): | 50 Ω // 0 pF |
| 2.5. Input power level: | +1 dBm |

- | | |
|----------------------------|------------------------------------|
| 3. Marking on the case: | firm, year week
QF 45.0-6000/02 |
| 4. Environment conditions: | Corresponding to Telefilter CF001 |

Edited by: _____ date: _____ name: _____