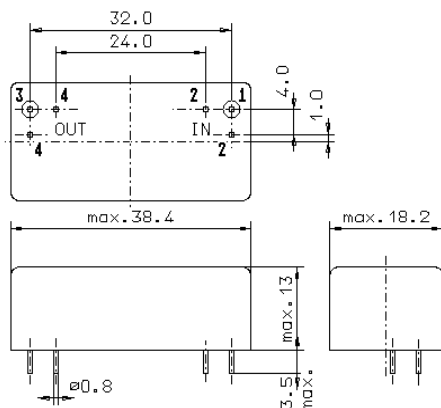


Specification for crystal filter

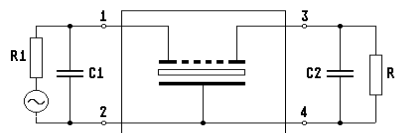
QF 70.0-20000/05

1. General

1.1. Package:



GM17



- | | |
|---|---------------------|
| 1.2. Type name: | QF 70.0-20000/05 |
| 1.3. Number of poles: | 4, fundamental mode |
| 1.4. Operating temperature range (OTR): | -20°C to +80°C |
| 1.5. Storage temperature range: | -45°C to +85°C |

2. Electric values

- | | |
|---|---|
| 2.1. Nominal centre frequency fo: | 70.0 MHz |
| 2.2. Pass band | |
| 2.2.1. Bandwidth between 6 dB - frequencies: | > fo ± 95 kHz |
| 2.2.2. Ripple: | Gaussian |
| 2.2.3. Group delay in OTR: | < 1.0 µs at fo ± 75 kHz |
| 2.2.4. Insertion loss:
(measured on smallest attenuation in pass band) | < 8 dB |
| 2.3. Stop band | |
| 2.3.1. fo ± 500 kHz | > 40 dB |
| 2.3.2. fo ± 800 kHz | > 60 dB |
| 2.3.3. fo ± 2000 kHz | > 75 dB |
| 2.3.4. Spurious responses: | permitted at frequencies > fo + 800 kHz |
| 2.4. Terminating impedance (input and output): | 50 Ω // 0 pF |
| 2.5. Max. input power level (operate): | -5 dBm |
| 2.6. Max. input power level without damage: | +10 dBm |
| 3. Marking on the package: | manufacturer, date code
QF 70.0-20000/05 |
| 4. Environment conditions: | Corresponding to Telefilter CF001 |

Edited by: _____ date: _____ name: _____